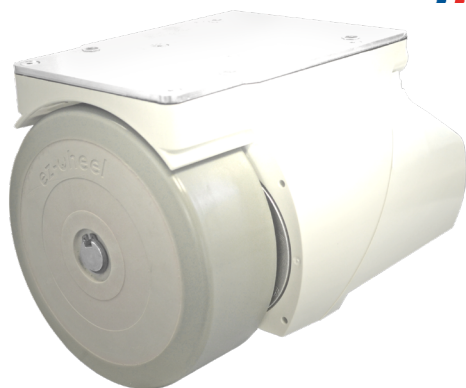


## ezW160M+



### Technical characteristics

<b>Diameter</b>	158 mm
<b>Type of Tyre</b>	PU 70 sh.A - Flat profile
<b>Speed range (traction)</b>	0 to 5 km/h
<b>Peak pushing effort</b>	27 daN Moves 750 kg
<b>Nominal performance</b>	9 daN at 5 km/h
<b>Maximum rolling speed</b>	8 km/h
<b>Battery capacity</b>	0/70/140 Wh
<b>Option(s)</b>	Additional battery

- ✓ ez-Wheel® autonomous wheel **ezW160M+** - Series 160
- ✓ developed for the medical environment
- ✓ suitable for:
  - catering trolleys
  - transfer chairs and beds
  - rolling equipment for hospitals
  - (...)

### Component specifications

#### Motor



Technology	BLDC PM
Gearbox	2-stage helical
Indicative lifespan*	2 000 h / 5 000 km 600 000 starts/stops
Nominal speed	167 rpm (5 km/h)
Nominal power	130 W (S1)
Peak torque	22 Nm

#### Battery



Electrochemistry	Ni-MH
Energy	70 Wh (1 battery) 140 Wh (2 batteries)
Indicative lifespan*	2-3 years
Recharge mode	Charger or external power
Minimum charging time*	1.5 hours (to 90%)

#### Interface



Wired	Analog or Serial
Wireless	-

### Conditions of use



Temperatures	-10 to +40 °C
IP index	IP66
Maintenance period*	2-3 years

The wheel can be used inside or outside, over a wide range of temperatures. The components – including the battery – do not need any inspection or maintenance over the product's whole lifespan.

### Weight



Wheel weight	6 kg
Maximum vertical load	50 kg up to 5 km/h

The robust assembly can withstand knocks and severe vibration. The wheel is designed to be installed as a fifth wheel with a suspension.

*ez-Wheel products are guaranteed 1 year from the date of purchase and 2 years against production defects. Consult the general conditions of sale for more information.*

All values are subject to changes without prior notice.

\*: Values for reference, based on standard condition testing, may vary with different application cases.

ez-wheel.com