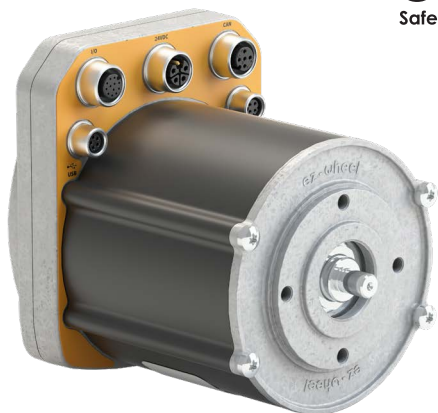


ezSWDcore.0x/C



Technical characteristics

Speed range (traction)	0 to 1 800 rpm
Nominal performance	1.7 Nm at 1 400 rpm
Option(s)	Parking brake /B

- ✓ ez-Wheel® ezSWDcore.0x/C - SWD® Core
- ✓ featuring exclusive SWD® technology
- ✓ suitable for:
 - Robots
 - Pallet shuttles
 - Lifts
 - Conveyors

Component specifications

Motor



Technology	BLDC PM
Gearbox	Planetary ratio 1:1
Indicative lifespan*	5 000 h 1 500 000 starts/stops
Nominal speed	1 400 rpm
Nominal power	250 W (S1)
Peak torque	4.4 Nm

Safety features



Motor disconnection	STO SIL3/PLc
Motion control	SLS, SDI, SMS, SIL2/PLd
Braking	SBC SIL2/PLd
Encoder	30 ppr SIL2/PLd
Interface	CANopen Safety®

Conditions of use



Temperatures	0 to +40 °C
IP index	IP66 (electronic housing)
Maintenance period*	5 years

The product can be used inside or outside, over a wide range of temperatures. The components do not need any inspection or maintenance over the product's whole lifespan.

Weight



Product weight	2,7 kg 3,5 kg with brake
----------------	-----------------------------

All values are subject to changes without prior notice.

*: Values for reference, based on standard condition testing, may vary with different application cases.

ez-wheel.com