



ez-wheel.com
eu.idec.com

QUICK ELECTRICAL ASSISTANCE FOR
INDUSTRIAL MANUAL HANDLING EQUIPMENT.

EW1A-SK150A
ASSIST WHEEL DRIVE kit
EW1A
Series

EW1A-SK150A kit provides a quick electrical assistance for industrial manual handling equipment such as tool trolley, rolling equipment for factories, mobile workstation, etc. Applied to this equipment, it can solve major issues for employees as well as for companies.

SWITCHES

SAFETY

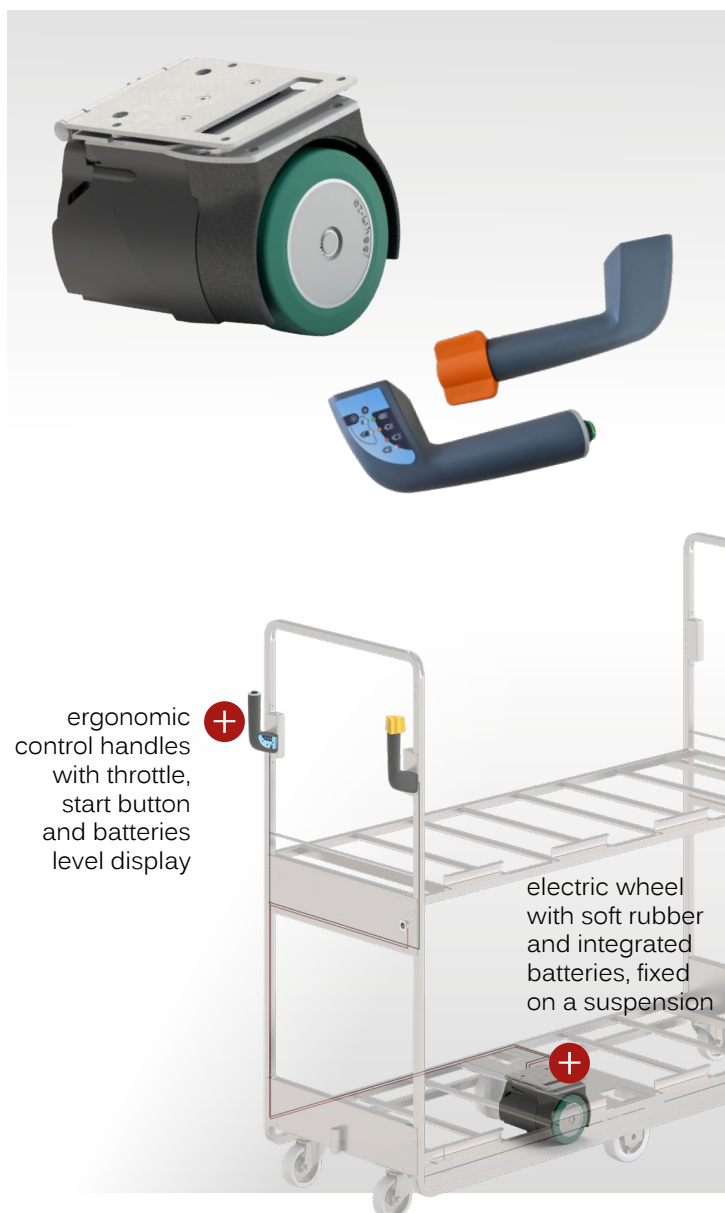
PANEL

AUTOMATION



MAIN APPLICATIONS

- Industrial trolley
- Rolling equipment for factories
- Mobile workstation and tools trolley

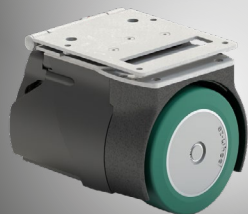


EW1A

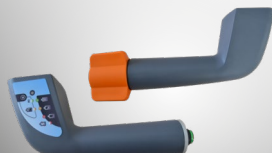
Series

EW1A-SK150A ASSIST WHEEL DRIVE kit

The EW1A-SK150A kit is
ready to go!



electric wheel and suspension



+ accessories

ergonomic control handles



PRODUCT BENEFITS

[+] READY TO USE

The kit includes all the components you need to power your mobile applications: wheel drive with integrated batteries, suspension, control, charger and set of cables.

[+] EASY MECHANICAL INTEGRATION

Electric wheel compactness facilitates mechanical integration, either as original equipment or retrofitted from existing trolleys.

[+] HIGH LEVEL OF PERFORMANCE

Motorization increases the carrying capacity and reduces the number of trips.

[+] ROBUST ASSEMBLY

The robust assembly enables the wheel to support heavy loads and withstand severe shock and vibration. 1000 kg per wheel can be moved effortlessly.

[+] ERGONOMIC CONTROL HANDLES

In addition to its ergonomic design, the control unit features a LED display indicating the wheel's battery state of charge.

INCLUDED INTO THE KIT

- Assist Wheel Drive Series 150 electric wheel with integrated batteries and its suspension
- Set of control handles equipped with button and display
- Set of accessories: cable for control handles, charger with international power cords (EU, UK and US)



ERGONOMIC AND PRACTICAL HANDLE

- The command controls forward and reverse speed.
- An On/Off button completes the system.

- A LED display indicates the battery level of the wheel and the state of charge.

